



# INDOFINE Chemical Company, Inc.

121 Stryker Lane, Bldg. 30, Suite 1 • Hillsborough, NJ 08844 • U.S.A.

Phone: (908) 359-6778 • FAX: (908) 359-1179

website: [www.indofinechemical.com](http://www.indofinechemical.com)

e-mail: [chemical@indofinechemical.com](mailto:chemical@indofinechemical.com)

## CERTIFICATE OF ANALYSIS

Cat No.: L-101

Product: LUTEOLIN  
(5,7,3',4'-Tetrahydroxyflavone)

Cas Number: [491-70-3]

Lot Number: 1111176

Chemical Formula: C<sub>15</sub>H<sub>10</sub>O<sub>6</sub>

Molecular Weight: 286.24

Melting Point: >270°C

Appearance: Light green powder

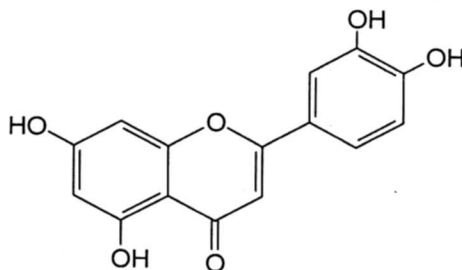
Loss on drying: 2.06%

Solubility: DMSO

TLC: Chloroform:methanol (9:1)

Storage: Cool dry place

Purity (HPLC): 97.24%





# INDOFINE Chemical Company, Inc.

121 Stryker Lane, Bldg. 30, Suite 1 • Hillsborough, NJ 08844 • U.S.A.

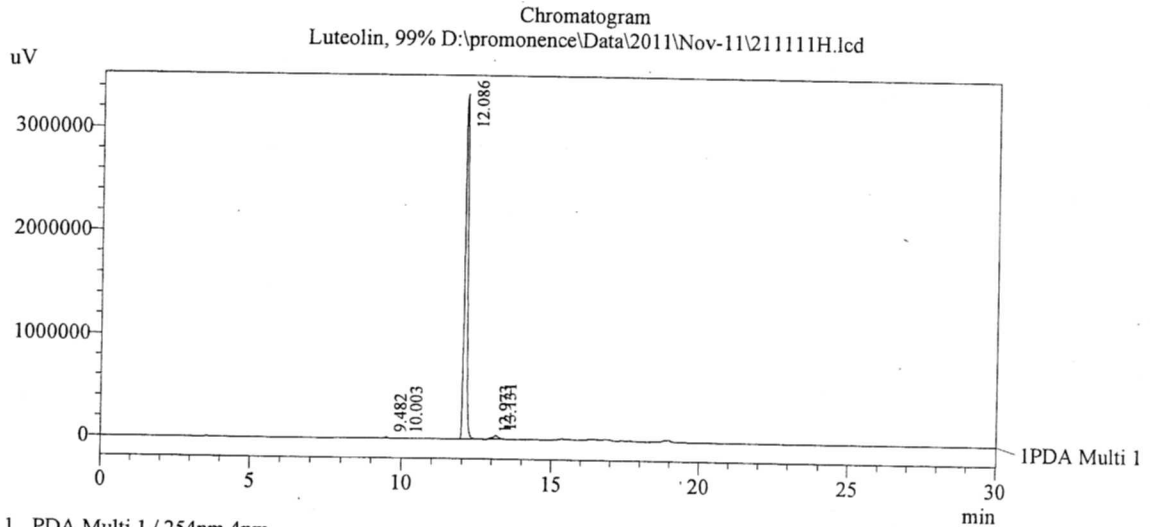
Phone: (908) 359-6778 • FAX: (908) 359-1179

website: [www.indofinechemical.com](http://www.indofinechemical.com)

e-mail: [chemical@indofinechemical.com](mailto:chemical@indofinechemical.com)

## HPLC ANALYSIS

Acquired by	: Admin	Cat. No.:	L-101
Sample Name	: Luteolin	Product name:	Luteolin
Sample ID	: Lot No :- 1111176	Lot No.:	1111176
Injection Volume	: 20 uL		
Data Filename	: 211111H.lcd		
Method Filename	: Linear Gradient.M.lcm		
Date Acquired	: 11/21/2011 2:55:37 PM		
Data Processed	: 11/22/2011 6:11:13 PM		
Column	: LUNA C-18(2), (250mm x4.6mm 5.0μ)		
Flow	: 1.000 mL/min.		
Mobile Phase	: A(0.05% TFA in water) B(Acetonitrile)		
	0.01 90 10		
	12.0 10 90		
	20.0 10 90		
	25.0 90 10		
	30.0 90 10		



1 PDA Multi 1 / 254nm 4nm

PeakTable

PDA Ch1 254nm 4nm

Peak#	Name	Ret. Time	Area	Area %	Relative Retention Time
1	RT:9.482	9.482	88234	0.37	0.78
2	RT:10.003	10.003	25640	0.11	0.83
3	RT:12.086	12.086	23030674	97.24	1.00
4	RT:12.973	12.973	122412	0.52	1.07
5	RT:13.131	13.131	417973	1.76	1.09
Total			23684933	100.00	

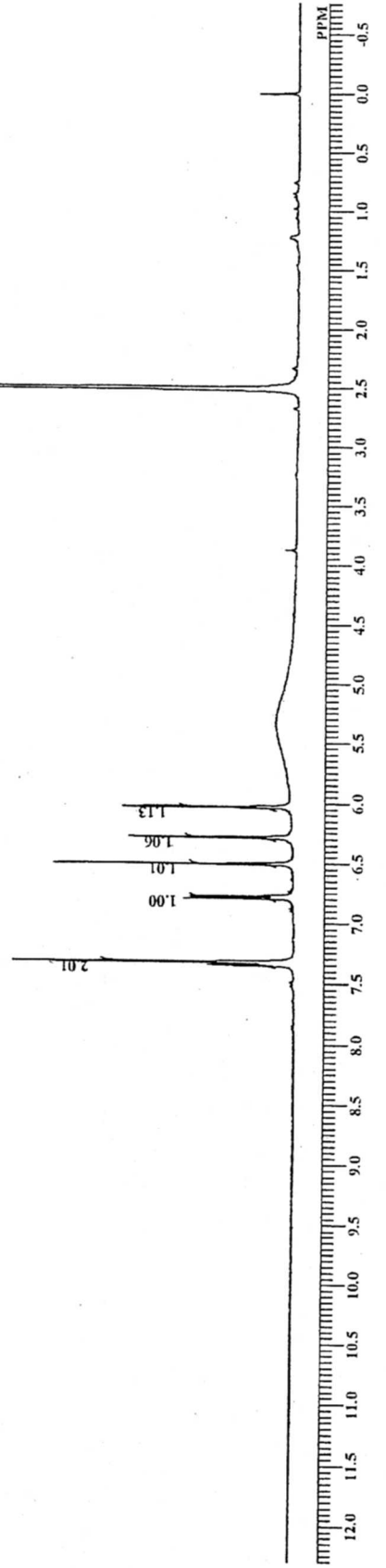


INDOFINE Chemical Company, Inc.  
121 STRYKER LANE  
BLDG. 30, SUITE 1  
HILLSBOROUGH, NJ 08844

Cat. No.: L-101  
Product name: Luteolin  
Lot No.: 1111176

IFC-13 1H NMR DMSO-D6

DFILE IFC-13.dh  
COMNT IFC-13 1H NMR DMSO-D6  
DATIM Wed Nov 23 12:04:22 2011  
OBNUC 1H  
EXMOD NON  
OBPRO 399.65 MHz  
OBSET 124.00 KHz  
OBFIN 10500.00 Hz  
POINT 65536  
FREQU 7992.01 Hz  
SCANS 12  
ACQTM 8.2002 sec  
PD 3.0000 sec  
PWI 5.60 usec  
IRNUC 1H  
CTEMP 24.0 c  
SLVNT DMSO  
EXREF 0.00 ppm  
BF 0.30 Hz  
RGAIN 19





INDOFINE Chemical Company, Inc.  
121 STRYKER LANE  
BLDG. 30, SUITE 1  
HILLSBOROUGH, NJ 08844

Cat. No.: L-101  
Product name: Luteolin  
Lot No.: 1111176

IFC-13 1H NMR DMSO-D6

DEFILE IFC-13.ms  
COMNT IFC-13 1H NMR DMSO-D6  
DATIM Wed Nov 23 12:04:22 2011  
OBNUC 1H  
EXMOD NON  
OBFRO 399.65 MHz  
OBSET 124.00 KHz  
OBFIN 10500.00 Hz  
POINT 65536  
FREQU 7992.01 Hz  
SCANS 12  
ACQTM 8.2002 sec  
PD 3.0000 sec  
PW1 5.60 usec  
IRNUC 1H  
CTEMP 24.0 c  
SLVNT DMSO  
EXREF 0.00 ppm  
BF 0.30 Hz  
RGAIN 19

